

Madison, Wisconsin

INDEX OF SHEETS

SHEET NO.	1	COVER SHEET
SHEET NO.	EX1	EXISTING CONDITIONS
SHEET NO.	S1	SITE PLAN
SHEET NO.	GP1	GRADING & EROSION CONTROL PLAN
SHEET NO.	U1	UTILITY PLAN
SHEET NO.	U2	UTILITY PLAN- BASALT LANE STORMSEWER SAS
SHEET NO.	U3	STORM SEWER SCHEDULE
SHEET NO.	L1	TREE CLEARING, SEEDING & PROTECTION PLAN
SHEET NO.	D1	DETAIL SHEET
SHEET NO.	D2	DETAIL SHEET - DETENTION BASIN

CITY OF MADISON
CITY ENGINEERING DIVISION
DEPARTMENT OF PUBLIC WORKS
PLAN OF PROPOSED IMPROVEMENT
PRAIRIE HILLS DETENTION BASIN IMPROVEMENTS

CITY PROJECT NO. 14915
CONTRACT NO. 9605

PUBLIC IMPROVEMENT PROJECT
APPROVED

APPROVED DATE
10/29/24

BY THE COMMON COUNCIL
OF MADISON, WISCONSIN

PUBLIC IMPROVEMENT DESIGN
APPROVED BY:

[Signature]

Nov 1, 2024

City Engineer

Date

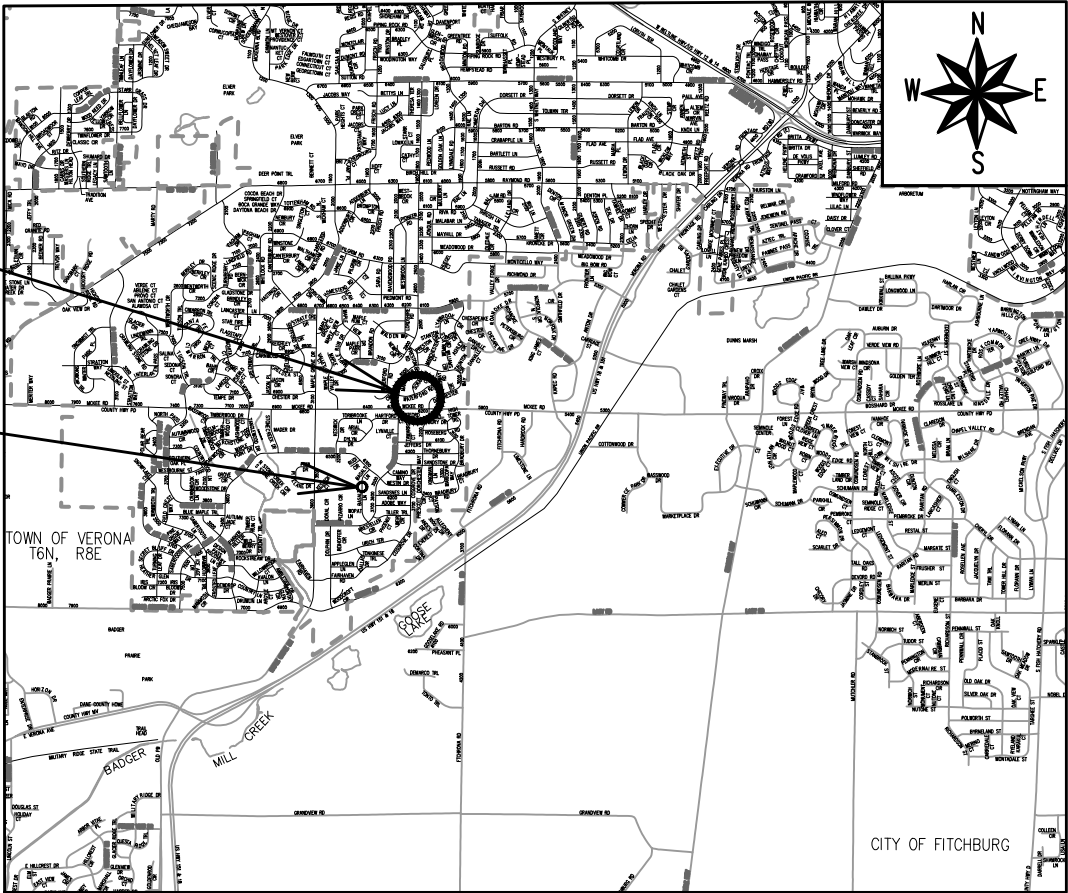
SITE
DESIGNED BY:



Nov 1, 2024

PROJECT
LOCATION

ADDITIONAL BASALT LANE
STORMSEWER SAS
CONSTRUCTION LOCATION

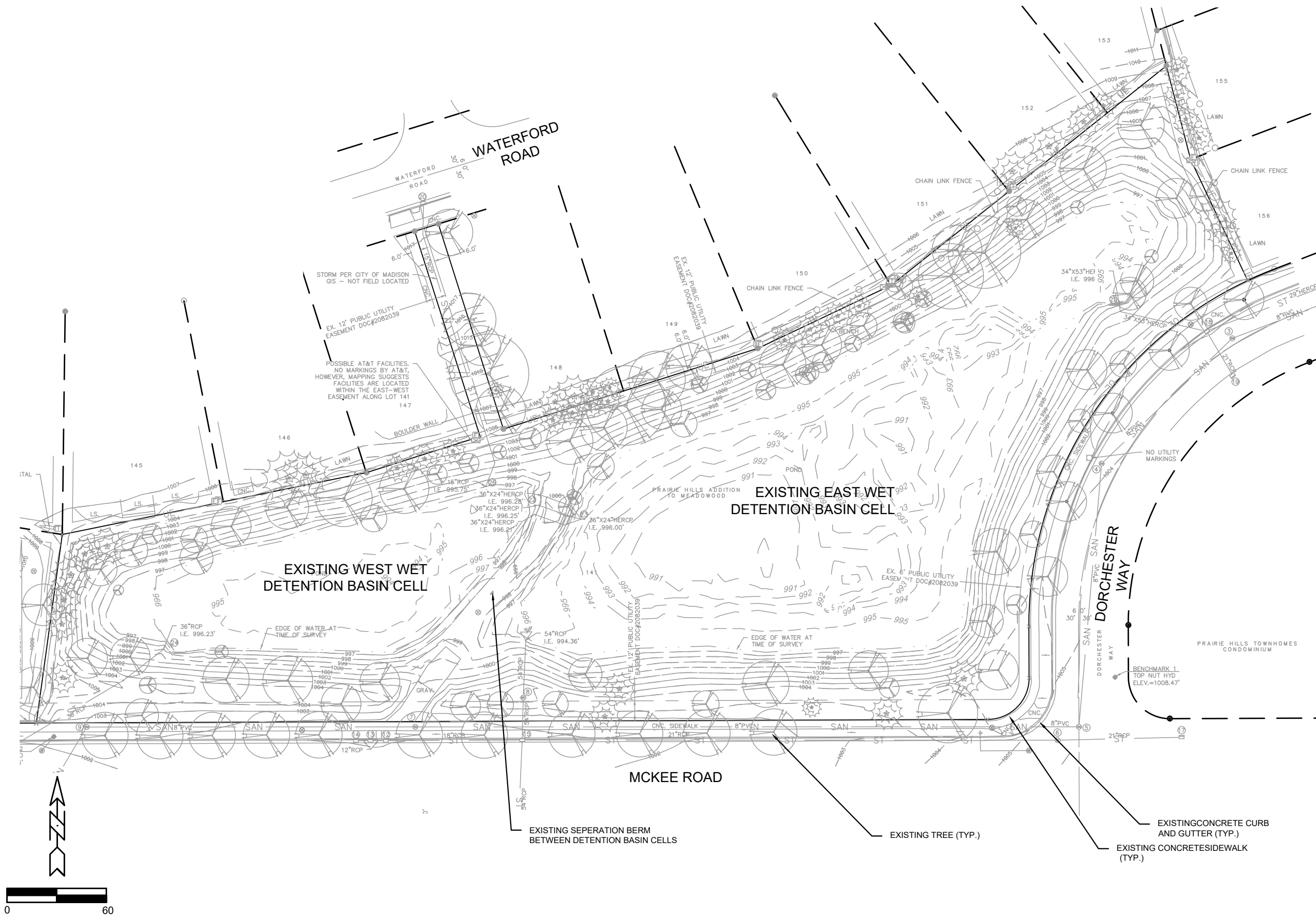


PLOT SCALE: 1:1_XREF

PLOT NAME: ---

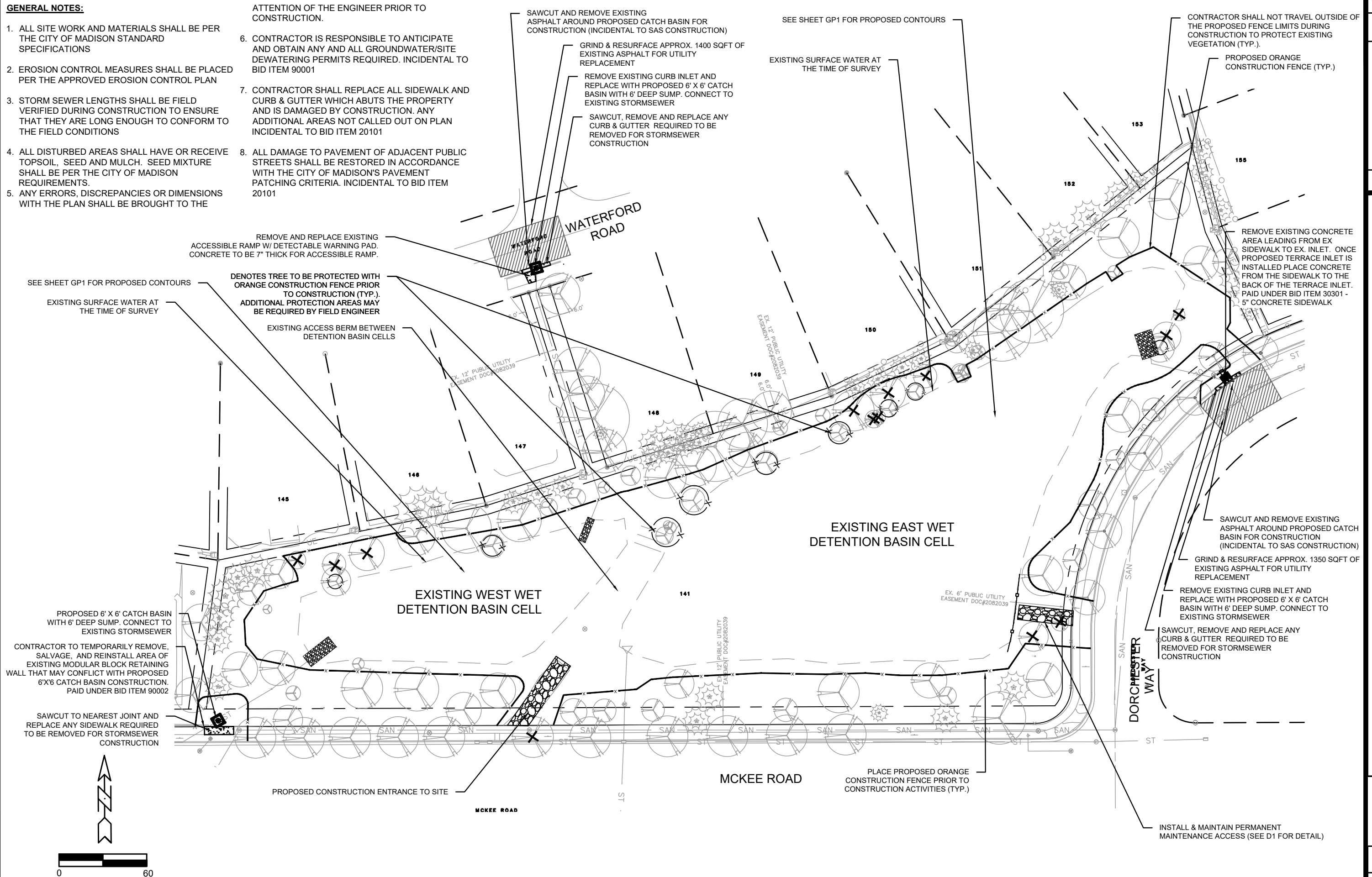
REV. DATE: 10/30/2024 8:43 AM

ORIGINATOR: CITY_OF_MADISON



1. ALL SITE WORK AND MATERIALS SHALL BE PER THE CITY OF MADISON STANDARD SPECIFICATIONS
2. EROSION CONTROL MEASURES SHALL BE PLACED PER THE APPROVED EROSION CONTROL PLAN
3. STORM SEWER LENGTHS SHALL BE FIELD VERIFIED DURING CONSTRUCTION TO ENSURE THAT THEY ARE LONG ENOUGH TO CONFORM TO THE FIELD CONDITIONS
4. ALL DISTURBED AREAS SHALL HAVE OR RECEIVE TOPSOIL, SEED AND MULCH. SEED MIXTURE SHALL BE PER THE CITY OF MADISON REQUIREMENTS.
5. ANY ERRORS, DISCREPANCIES OR DIMENSIONS WITH THE PLAN SHALL BE BROUGHT TO THE

6. CONTRACTOR IS RESPONSIBLE TO ANTICIPATE AND OBTAIN ANY AND ALL GROUNDWATER/SITE DEWATERING PERMITS REQUIRED. INCIDENTAL TO BID ITEM 90001
7. CONTRACTOR SHALL REPLACE ALL SIDEWALK AND CURB & GUTTER WHICH ABUTS THE PROPERTY AND IS DAMAGED BY CONSTRUCTION. ANY ADDITIONAL AREAS NOT CALLED OUT ON PLAN INCIDENTAL TO BID ITEM 20101
8. ALL DAMAGE TO PAVEMENT OF ADJACENT PUBLIC STREETS SHALL BE RESTORED IN ACCORDANCE WITH THE CITY OF MADISON'S PAVEMENT PATCHING CRITERIA. INCIDENTAL TO BID ITEM 20101



MARK	REVISION	DATE	BY
Dispersed By: GVP	Date: 6/8/2022 10:38 AM	Scale: -	S1
14915			

CONTRACT NO: 9605

3147 DORCHESTER WAY

14915

SITE PLAN

PRAIRIE HILLS DETENTION BASIN IMPROVEMENTS

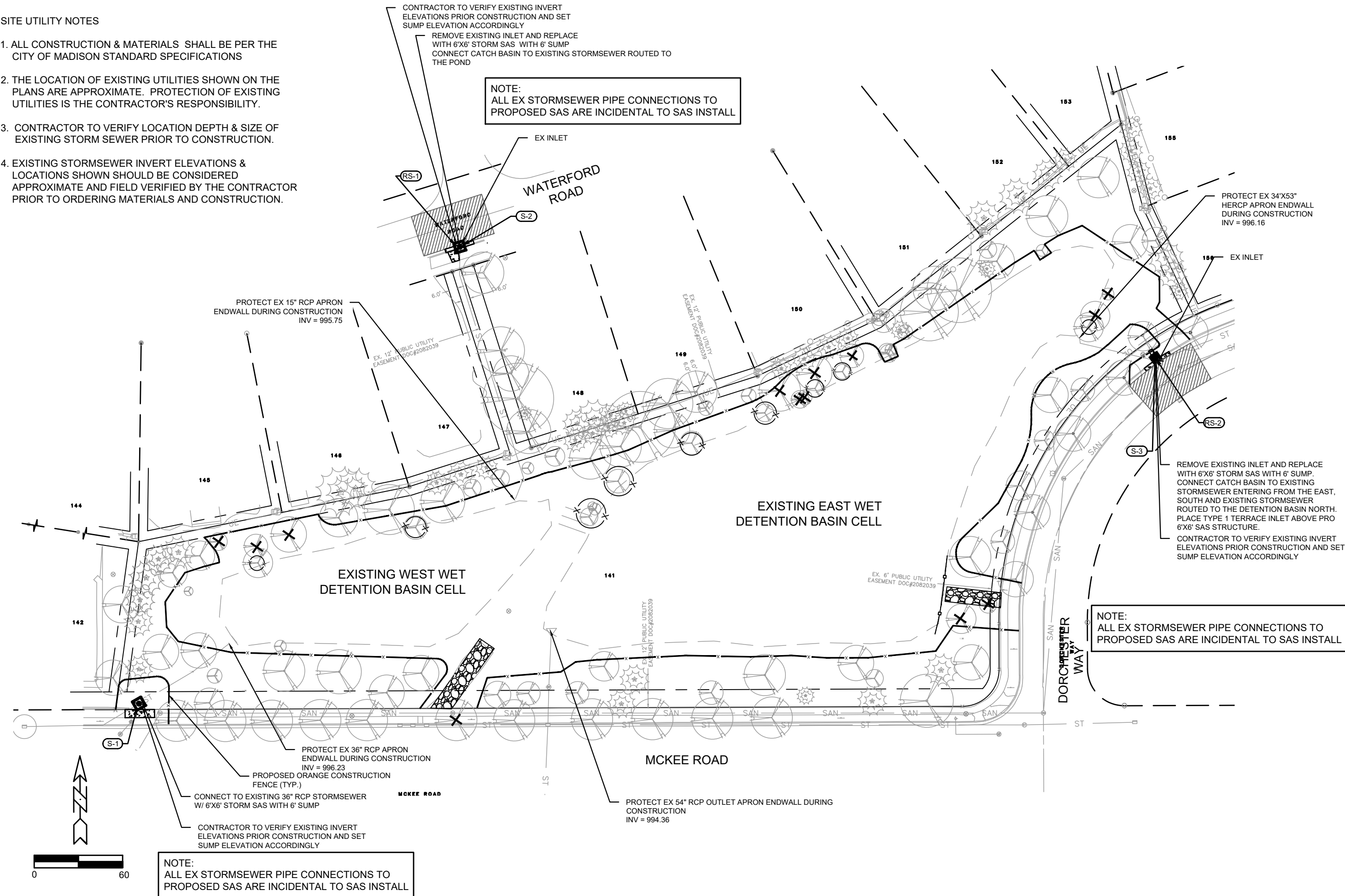
M:\DESIGN\Projects\11068\CAD\Sewers\11068 East Town Detention Basin.dwg



4915
S1

SITE UTILITY NOTES

1. ALL CONSTRUCTION & MATERIALS SHALL BE PER THE CITY OF MADISON STANDARD SPECIFICATIONS
2. THE LOCATION OF EXISTING UTILITIES SHOWN ON THE PLANS ARE APPROXIMATE. PROTECTION OF EXISTING UTILITIES IS THE CONTRACTOR'S RESPONSIBILITY.
3. CONTRACTOR TO VERIFY LOCATION DEPTH & SIZE OF EXISTING STORM SEWER PRIOR TO CONSTRUCTION.
4. EXISTING STORMSEWER INVERT ELEVATIONS & LOCATIONS SHOWN SHOULD BE CONSIDERED APPROXIMATE AND FIELD VERIFIED BY THE CONTRACTOR PRIOR TO ORDERING MATERIALS AND CONSTRUCTION.



MARK	REVISION	DATE	BY
14915		6/8/2022 10:38 AM	U1

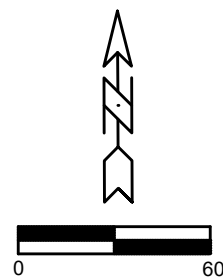
14915
3147 DORCHESTER WAY
CONTRACT NO: 9605

UTILITY PLAN
PRAIRIE HILLS DETENTION BASIN IMPROVEMENTS
M:\DESIGN\Projects\11066\CAD\Sewers\11066 East Town Detention Basin.dwg



14915
U1

1. ALL CONSTRUCTION & MATERIALS SHALL BE PER THE CITY OF MADISON STANDARD SPECIFICATIONS
2. THE LOCATION OF EXISTING UTILITIES SHOWN ON THE PLANS ARE APPROXIMATE. PROTECTION OF EXISTING UTILITIES IS THE CONTRACTOR'S RESPONSIBILITY.
3. CONTRACTOR TO VERIFY LOCATION DEPTH & SIZE OF EXISTING STORM SEWER PRIOR TO CONSTRUCTION.
4. EXISTING STORMSEWER INVERT ELEVATIONS & LOCATIONS SHOWN SHOULD BE CONSIDERED APPROXIMATE AND FIELD VERIFIED BY THE CONTRACTOR PRIOR TO ORDERING MATERIALS AND CONSTRUCTION.



NOTE:
ALL EX STORMSEWER PIPE CONNECTIONS TO
PROPOSED SAS ARE INCIDENTAL TO SAS INSTALL

CONTRACTOR TO PERFORM A ULO AND ONE CALL ON THE EXISTING STORMSEWER PRIOR TO STORMSEWER SAS CONSTRUCTION TO DETERMINE EXISTING STORMSEWER DEPTH, CONNECTION LOCATIONS AND FIELD SET SAS LOCATION

[illegible]

STORM SEWER SCHEDULE

PROPOSED STORM STRUCTURES

STRUC. NO.	LOCATION (NORTHING)	LOCATION (EASTING)	TYPE	TOPOF CASTING	Approx Ex E.L.	DEPTH	NOTES
S-1	461410.0624	792849.5512	6'X6' SAS	1002.90	997.08	11.82 (Includes 6'Sump)	(1)(2)(3)(4)(5)
S-2	461719.9007	793067.2046	6'X6' SAS	1016.16 TOC	1011.14	11.02 (Includes 6'Sump)	W/R-3067-7004-R(1)(2)(5)(6)
S-3	461645.5873	793538.8517	TERRACE INLET TYPE 5 W/6'X6' SAS	1003.36 TOC	998.56	10.80' (Includes 6'Sump)	1' Curb Radius (1)(2)(7)(8)
S-4	Field Locate	Field Locate	6'X6' SAS	Field Locate	Field Locate	Field Locate	(1)(2)(4)(5)(10)(11)

SPECIFIC NOTES:

- (1) STRUCTURE INCLUDED 6' SUMP
- (2) CONTRACTOR TO VERIFY EXISTING PIPE SIZES, LOCATIONS AND INVERTS PRIOR TO CONSTRUCTION
- (3) CONNECT TO EX 36" RCP, REMOVALS & CONNECTION PAID AS INCIDENTAL TO S-1
- (4) TWIN CASTINGS PER S.D.D 5.7.15 AND SDD 5.7.16
- (5) PER S.D.D. 5.7.4 WITH ADDITIONAL 6' SUMP
- (6) CONNECT TO EX 15" NW & SE RCPS , REMOVALS & CONNECTION PAID AS INCIDENTAL TO S-2
- (7) CONNECT TO EX 29" HERCP, 34"X53" HERCP & 21" RCP, REMOVALS & CONNECTION PAID AS INCIDENTAL TO S-3
- (8) PER S.D.D. 5.7.12D, TERRACE INLET OVER 6'X6' SAS
- (9) CASTING SHALL BE SET 0.2' BELOW TOP OF CURB; TOC GIVEN IN CHART IS TOP OF CURB
- (10) CONNECT TO EX 42" RCP, REMOVALS & CONNECTION PAID AS INCIDENTAL TO S-4
- (11) CONTRACTOR TO PREFORM ULO AND ONE CALL PRIOR TO CONSTRUCTION TO SET PROPOSED STRUCTURE LOCATION & OBTAIN INV ELEVATION FOR CONSTRUCTION AND SETTING SUMP ELEVATION

STANDARD NOTES:

- PLAN LENGTH (PAY LENGTH) IS FROM CENTER OF STRUCTURE TO CENTER OF STRUCTURE. PIPE LENGTH IS ACTUAL LENGTH OF PIPE FROM STRUCTURE WALL TO STRUCTURE WALL. SLOPE CALCULATED USING PIPE LENGTH.
- ABBREVIATIONS: AE = APRON ENDWALL; RCP = REINFORCED CONCRETE PIPE; HERCP = HORIZONTAL ELLIPTICAL REINFORCED CONCRETE PIPE; DNA = DOES NOT APPLY; SAS = SEWER ACCESS STRUCTURE; LP= LOW POINT INLET STRUCTURE; FP= FIELD POURED STRUCTURE; TR = TOP OF CONCRETE ROOF; NCM = NO CROWN MATCH FOR PIPES; UD = UNDERDRAIN
- APPROXIMATE DISCHARGE E.I. GIVEN, ADJUST E.I. AND PIPE SLOPE IN THE FIELD.
- TOP OF CASTING GRADE GIVEN IS THE TOP OF CURB FOR INLET STRUCTURES AND THE FLOWLINE OF THE CLOSED CASTING FOR SAS's.

EXISTING STORM STRUCTURE REMOVALS

STRUC. NO.	LOCATION (NORTHING)	LOCATION (EASTING)	TYPE	APPROX. DEPTH (FT)	NOTES
RS-1	461719.84	793067.21	STREET INLET	5.02	REMOVAL PAID UNDER BID ITEM 20313, EX STRUC. #IN2973-019
RS-2	461642.60	793540.33	STREET INLET	4.80	REMOVAL PAID UNDER BID ITEM 20313; EX STRUC. #IN3073-020

PRAIRIE HILLS DETENTION IMPROVEMENTS		SHEET NO.
PROJECT NO. 14915		1 of 1
STORM SEWER SCHEDULE		CITY OF MADISON



14915
U3

STORM SEWER SCHEDULE

PRAIRIE HILLS DETENTION BASIN IMPROVEMENTS

3147 DORCHESTER WAY

M:\DESIGN\Projects\110066\CAD\Sewers\110066 East Town Detention Basin.dwg

CONTRACT NO:


14915

9605

MARK	REVISION	DATE	BY
14915	14915	6/8/2022 10:38 AM	U2

LEGEND


— X — CONSTRUCTION FENCE



NO MOW TURF SEEDING



NATIVE PRAIRIE SEED MIX



TERRACE SEEDING

PROTECT TREE WITH
CONSTRUCTION
FENCE (TYP.)

REMOVE TREE TAG #60, 12" WHITE
ASH IN POOR CONDITION

REMOVE TREE TAG #61, 9" WHITE
ASH DEAD

REMOVE TREE TAG #67, 7"
WHITE ASH DEAD

REMOVE TREE TAG #23, 9" WHITE
ASH IN CRITICAL CONDITION

REMOVE TREE TAG #27, 12" WHITE
ASH IN POOR CONDITION

REMOVE TREE TAG #29, 5"
AMERICAN ELM

REMOVE TREE TAG #30, 5"
EUROPEAN ALDER

REMOVE TREE TAG #32, 14" WHITE
ASH IN POOR CONDITION

REMOVE TREE TAG #4, 1"
EUROPEAN ALDER
REMOVE TREE TAG #3, 9" —
EUROPEAN ALDER

CONSTRUCTION FENCE (TYP)

REMOVE TREE TAG #101, 7'
JAPANESE TREE LILAC IN FAIR
CONDITION

REMOVE TREE TAG #100, 10"
JAPANESE TREE LILAC IN FAIR
CONDITION 095

REMOVE SHRUB NOT IN TREE

- REMOVE SHRUB NOT IN TREE SURVEY

- REMOVE 8" DBH HACKBERRY
(APPROVED BY FORESTRY)

MARK	REVISION	DATE	BY
###	###	###	###
###	###	###	###
###	###	###	###
###	###	###	###
###	###	###	###

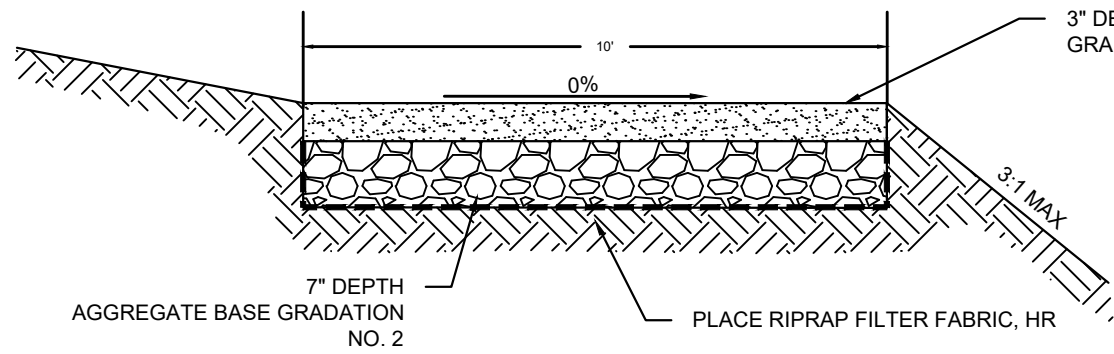
Date: 10/31/2024 1:06 AM
 Scale: ###
 Designed By: SCL
 74915

14915	MADISON, WI	CONTRACT NO: 9605
-------	-------------	-------------------

TREE CLEARING, SEEDING AND PROTECTION PLAN
PRAIRIE HILLS POND IMPROVEMENTS

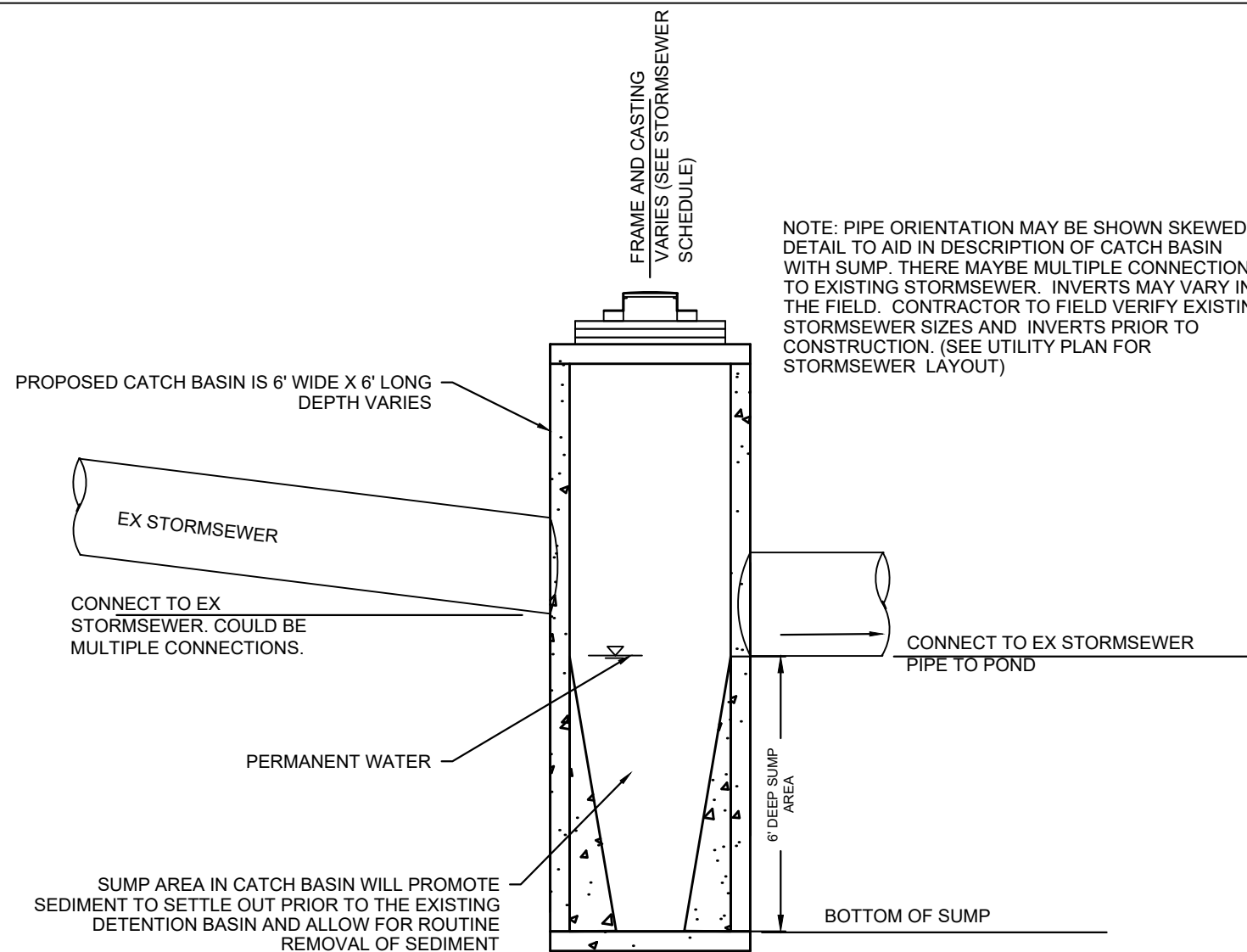


14915
L1



GENERAL NOTES:
 SUBGRADE SHALL BE CONSTRUCTED IN ACCORDANCE WITH
 CITY OF MADISON STANDARD SPECIFICATIONS.
 MAINTENANCE ACCESS ROAD PROFILE SHALL BE FIELD FIT
 TO APPROXIMATELY MATCH EXISTING GRADES
 SIDESLOPES SHALL BE TOPSOILED, SEEDED, AND MATTED
 IN ACCORDANCE WITH THE SPECIFICATIONS.

MAINTENANCE ACCESS ROAD TYPICAL SECTION-NTS



PROFILE VIEW

PROPOSED TYPICAL CATCH BASIN WITH SUMP EXHIBIT

NOT TO SCALE



14915

D1

DETAIL SHEET

PRAIRIE HILLS DETENTION BASIN IMPROVEMENTS

3147 DORCHESTER WAY

M:\DESIGN\Projects\11066\CAD\Sewers\11066 East Town Detention Basin.dwg

CONTRACT NO:

9605

14915

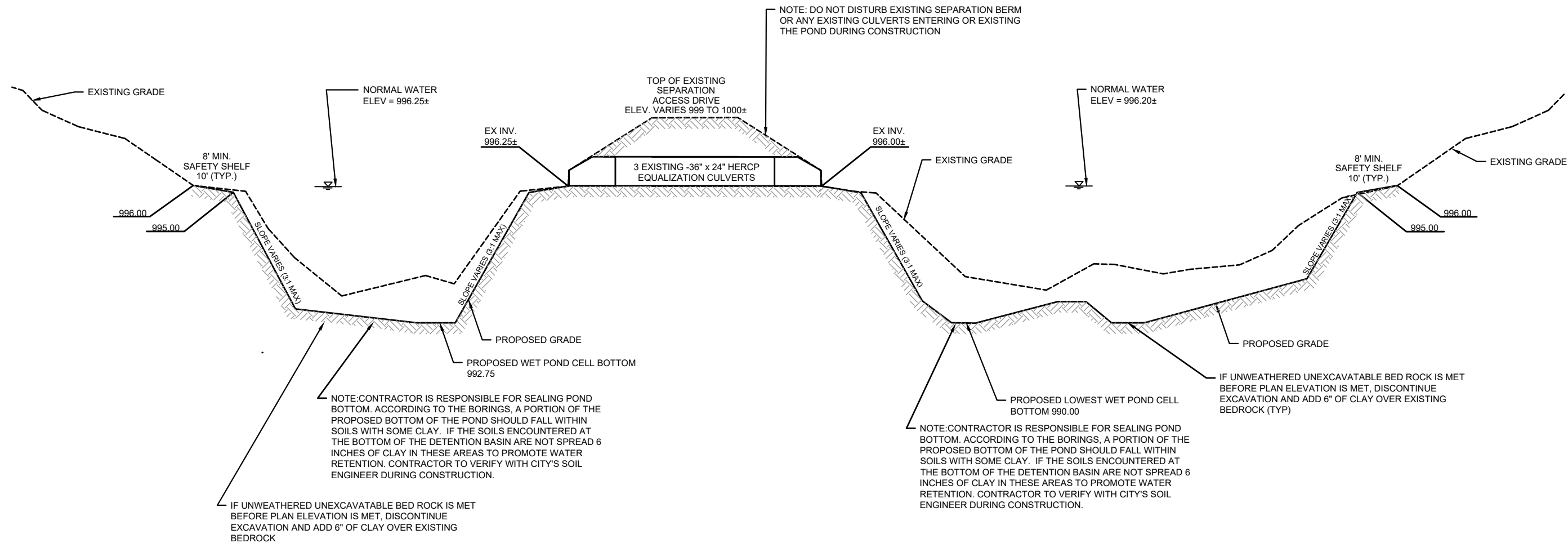
14915

REVISION

DATE

BY

D1



TYPICAL SECTION VIEW FROM WEST TO EAST
(SECTION VARIES IN THE FIELD)
PROFILE VIEW
PROPOSED PRAIRIE HILLS DETENTION BASIN
NOT TO SCALE

MARK	REVISION	DATE	BY
14915		6/8/2022 10:38 AM	

14915	3147 DORCHESTER WAY	9605
DETAIL SHEET-DETENTION BASIN	PRAIRIE HILLS DETENTION BASIN IMPROVEMENTS	CONTRACT NO:
M:\DESIGN\Projects\11066\CAD\Sewers\11066 East Town Detention Basin.dwg		



14915
D2